



## SOLDOS-V3 BASIC

### FUNCTION DESCRIPTION

Nebulisation system for brine solution to create a salty sea climate in steam rooms. The SOLDOS-V3 Basic sprays fine nebulised, sterile brine solution into steam rooms. After a short time, you get a salty sea climate in the room. The brine solution is primed out of an air sealed bag (Politainer), which prevents the contamination of the brine solution with germs from the ambient air. Then the brine is pressed through a very fine nozzle by a high-pressure diaphragm pump and nebulised. Furthermore a disinfection system is integrated. Operation via 5-line LC display and three buttons with a multitude of possibilities:

- Operation modes: cyclic-, clock timer- and external control
- Pressure monitoring for filling level brine and nozzle
- Day counter for the indication of a possible necessary disinfection and description of this procedure in plain text

### SCOPE OF DELIVERY

- Controller CB36 with 5-line LC display installed in housing
- Motor diaphragm pump, low noise
- Mounting board with console for brine bag
- Nozzle stainless steel V4A with cover screen PE
- Mounting sleeve and 5 m dosing tube PTFE
- Disinfection set with disinfection tablet, mixing bottle and recipient
- 5 kg sterile brine solution in Politainer (resp. 1 kg for private use)

### TECHNICAL DATA

Area of application	Steam rooms with a floor space of app. 25 m <sup>2</sup> (depending on air exchange rate)
Electrical supply	100-230 V-AC, 50-60 Hz
Power supply	80 W
Dimensions (W/H/D)	270 x 560 x 220 mm
Empty weight/ Operational weight	app. 5 kg / 10 kg
Temperature range	+10 to +35 °C
Protection class	IP44
Brine consumption at app. 10 h operation/day (system settings 10 min. pause/10 sec. dosing)	app. 1 kg / day

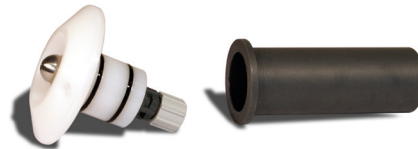


Photo: Nozzle and grommet

### TO BE PROVIDED BY THE BUILDER

- Plants room for the installation of system
- Power socket

### POINTS TO BE CONSIDERED BEFORE THE INSTALLATION:

- Before the installation of a SOLDOS all materials have to be checked on their corrosion resistance against the saline mixture of water and air both in the adequate steam cabinet and additionally in the ventilation pipework
- The SOLDOS is not licensed for medical purpose
- Use only pure, disinfected WDT brine solution with a salt concentration of app. 5%. WDT brine solution is delivered in a sterile condition in a closed bag. Outstanding brine solution is affected by bacterial impact and so should not be used
- In order to prevent drainage of the Politainer, the nozzle has to be installed on a higher level than the SOLDOS. If this is not possible a spring loaded non-return valve has to be installed in the dosing tube
- The SOLDOS-V3 Basic is not useful for dry rooms (Tepidarium etc.). For this purpose we recommend to use the SOLDOS-SL or SOLFOG system

### ACCESSORIES/OPTIONS

- Push button plate with bonnet for flush mounting
- Nozzle cover screen in stainless steel
- System for private steam rooms with 1 kg germfree brine solution in Politainer